

Alpine Fault Network

Disaster Relief Communications

Alpine Fault Network

Peter Mott | ZL3PWM | Coordinator

- Licensed in 1978 in Christchurch, Peter's career spans telecommunications, broadcast engineering, computing and Internet industries.
- Retired after 25 years of founding / operating two Auckland based Internet companies.
- Disaster relief communication service Alpine Fault Network and maritime safety service Passage Guardian are current projects.



Disaster Defined

Both natural and man made

- Natural disasters including earthquakes, tsunamis, tropical cyclones, storms, floods and wildfires.
- Man made disasters including nationwide electricity and / or telecommunication outages.
- Any region of New Zealand.

What We Do

Disaster Real Event

- Provide a transmission path for third party traffic when business as usual (BAU) communications are either down or overloaded.
- A third party is any person who asks us to send a message on their behalf.
- Both voice (phone) and data (Winlink) circuits are established.

What We Do

Disaster Exercises

- First Sunday of every month.
- HF voice check in and roll call on 40 metres (morning) and 80 metres (evening).
- Winlink email exercise in the afternoon using HF, VHF / UHF RMS gateways located within New Zealand.
- All equipment checked, batteries charged.

How it Works

Activation Procedure

Upon experiencing or becoming aware of;

- A disaster occurring anywhere within New Zealand.
- Regardless of a member's location at the time.

Members self activate without being asked or called;

- All activations are nationwide.
- All members make best effort to activate.

How it Works

Within Disaster Region

- After confirming the safety and welfare of their own household and others nearby, our members self activate as soon as practicable.
- Base and field stations within the disaster region pass traffic between affected communities and the Alpine Fault Network.
- Field station operators take their equipment to a previously tested location within the community and set up their station.
- Operators also switch on their PRS (UHF CB) radios and listen for traffic within the local community.

How it Works

Outside Disaster Region

- Stations located outside a disaster region are gateways between the Alpine Fault Network and destinations that are reachable using telephone and Internet.
- Operators forward messages using BAU (business as usual) communications such as telephone, SMS, and email.
- Stations located outside a disaster region may also be called upon to relay messages between stations within a disaster region who are unable to communicate directly.

Alpine Fault Network

Our Approach

- We believe that for disaster relief communications, amateur radio operators need initiative and be capable of functioning independently without direction.
- We don't wait to be asked, told, or given permission. Such strategies are disempowering. We just do it. If we need help, we ask.
- We each participate according to our availability, skill, equipment and budget.
- We are committed to helping each other and our community.
- We have no expectation of financial compensation or equipment handouts. We are volunteers using our own equipment operating on amateur radio frequencies.

Alpine Fault Network

Membership Requirements

- Passionate about helping people communicate when disaster strikes
- Certified Amateur Radio Operator
- Located within New Zealand
- Base and / or field HF station
- Capable of operating off grid during exercises

Alpine Fault Network

Membership by region

June 2025 | Total members (108)

Region	Members	Region	Members
Northland	2	Wellington	6
Auckland	15	Tasman	3
Waikato	9	Nelson	2
Bay of Plenty	4	Marlborough	7
Gisborne	1	Canterbury	20
Hawkes Bay	5	West Coast	6
Taranaki	2	Otago	10
Manawatu / Whanganui	9	Southland	7

Alpine Fault Network

How to Join

All certified amateur radio operators located within New Zealand are encouraged to join the Alpine Fault Network.

- No membership Fee
- No requirement to be a member of any club or organisation
- You need a base or field station capable of operating off grid
- Participate in monthly exercises (not compulsory, you determine how often)

Alpine Fault Network

How to Join

Becoming an AFN team member ensures;

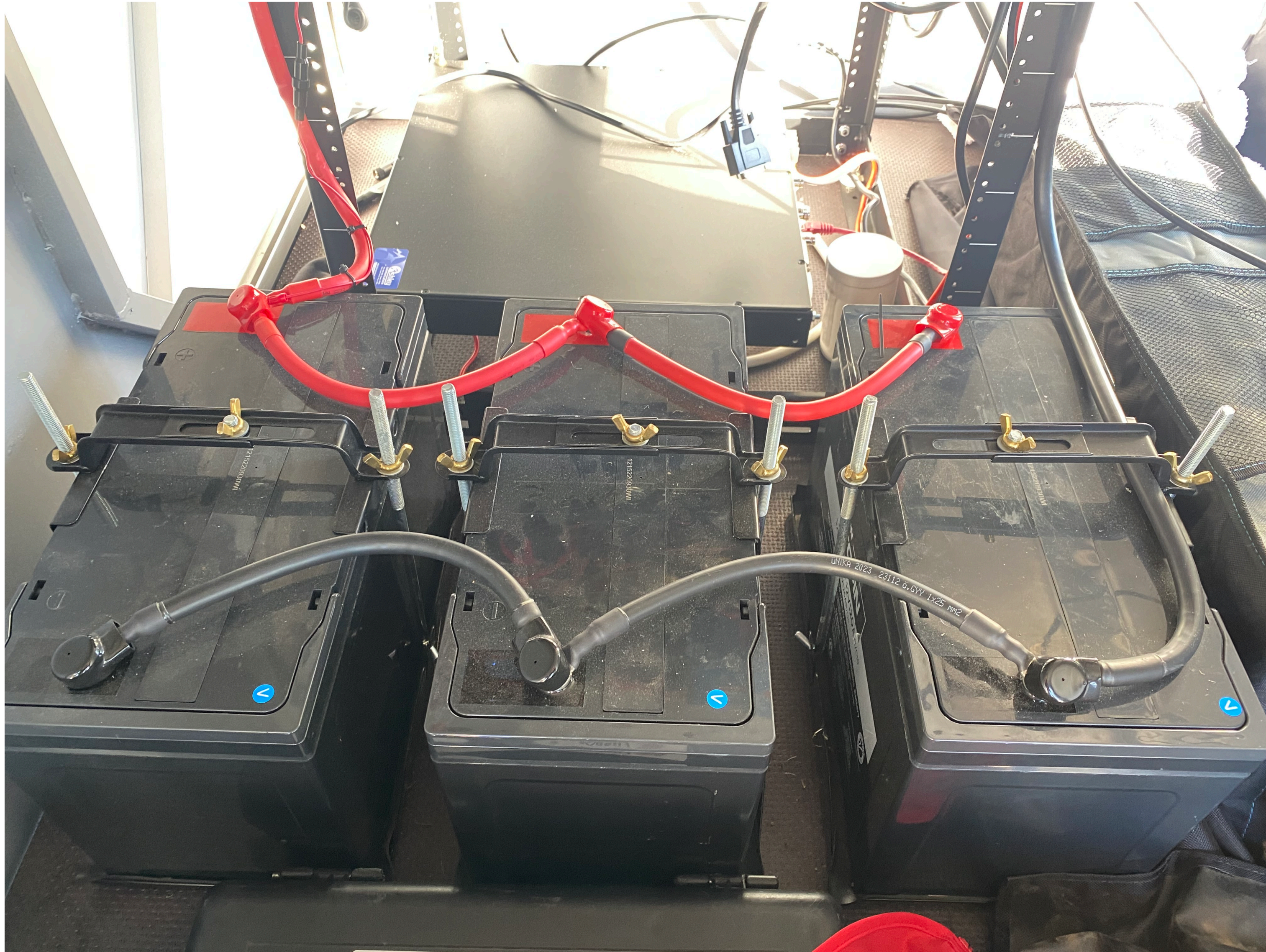
- You are on a database accessible by Civil Defence and Emergency Services
- You are notified when there are exercises planned outside our standard schedule of first Sunday in each month
- You receive the Alpine Fault Network monthly newsletter
- You have access to our team discussion group

<https://afn.org.nz/join/>

Communications Trailer



Communications Trailer



Communications Trailer



Communications Trailer



Communications Trailer



Alpine Fault Network

Thank you for your time today!